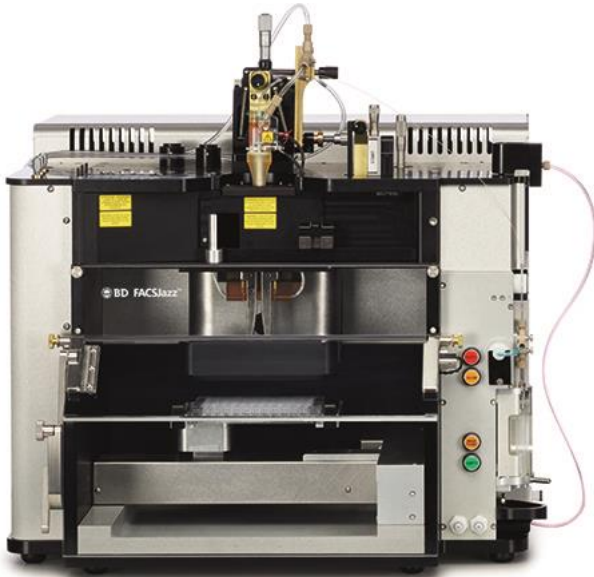


Curtin Health Innovation Research Institute
Flow Cytometry Sorting Platform Guide

BD FACSJazz (Hydrodynamic focusing stream-in-air)



BD FACSJazz Sorter Specifications:

- 2 laser system: Blue / Red configuration
- Measures 6 fluorochromes simultaneously
- Stream-in-air sorter
- Sample up to 20,000 events/second
- Two-way sorting capability: 5 – 15 ml tubes
- Single cell/well plate sort : 6/24/96/384 wells
- 100 µm fixed nozzle
- Contained in CAS PC2 certified hood
- Temperature control

CHIRI Shared Resource Flow Cytometry Laboratory

BD FACSJazz Cell Sorter

Bandpass Filter Configuration Guide

Channel Name	Standard Filters	Commonly Used Fluorophores
488 nm Blue Laser		
SSC	488/10	Side scatter
[B] 530/30	530/30	FITC, BB515, AF488, CFSE, GFP, YFP, Live/Dead Fixable Green
[B] 585/29	585/29	PE
[B] 694/40	694/40	PerCP, PerCP-Cy5.5, PE-AF700, Live/Dead Fixable
[B] 780/60	780/60	PE-Cy7, PE-AF750,
640 nm Red Laser		
[R] 660/20	660/20	APC
[R] 780/60	780/60	APC-Cy7, APC-H7

Note: This is not an exhaustive list of fluorophores, please contact CHIRI-Bioscience Flow Cytometry Staff if you need assistance checking the details of your panel.